

ADJUSTABLE LEG AND PLATE



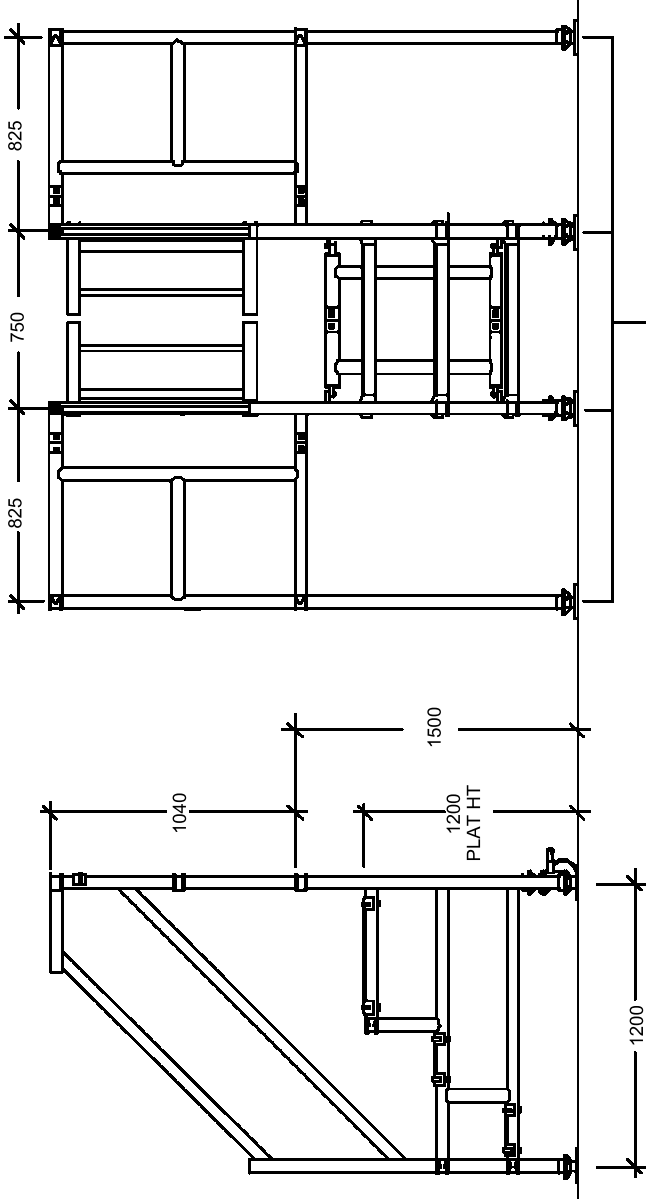
ADJUSTABLE LEG AND CASTOR



FOLDING BACK FRAME

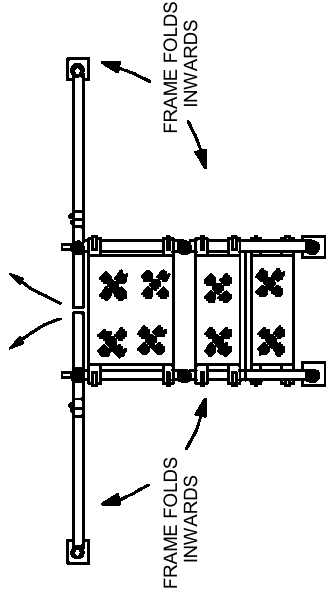


FOLDING SIDE FRAMES



ADJUSTABLE LEGS AND BASE PLATES

GATES OPEN ON TO TRAILER



FRAME FOLDS INWARDS

FRAME FOLDS INWARDS

LORRYPOD FEATURES AND BASIC DIMENSIONS



STEPS UP TO TRAILER

1200 LORRYPOD



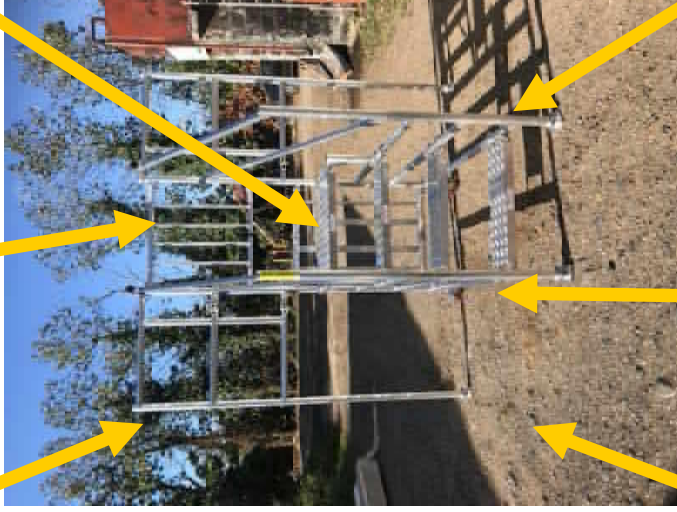
BACK FOLDING FRAME



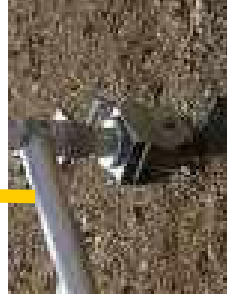
GATES



SIDE FOLDING FRAME



STEPS AND PLATFORM



LEG AND CASTOR



LEG AND BASEPLATE

ASSEMBLY GUIDE AND NOTES

1. Open centre frame until mechanism locks automatically.
2. Fit steps and platform.
3. Position at access point on the lorry.
4. Open side frames until mechanisms lock.
5. Level unit using adjustable legs, and lock castors.
6. Tie unit securely to lorry.
7. Access via steps, and lock gate after accessing.
8. Always keep gate locked when working on lorry.
9. To disassemble reverse procedure.

Dimensions :

Working Height— 1500 Trailer height
 Dimensions — Folded Height –2.5M x Width - 0.65M x Depth - 1.5M
 Weight— 55g Safe Working Load - 150kg)
 Manufactured under an ISO9001:2008 Quality System
 Complies fully with the Working at Height Regulations 2005
 Lightweight all Aluminium Construction

