

C99 D

SPARE PARTS LIST



C99 D

1 Spare parts list

POS	PAGE	CODE	DESIGNATION	TYPE (*)	REMARKS
1	EC01	00310006549	Basic Frame	S	
2	EC01	00310006550	Rear axle kit	S	
3	EC01	00310005495	Rear Wheel	W	
4	EC01	00310006551	Rear axle	S	
5	EC01	00310006552	Front wheel complete	W	
6	EC01	00310005502	Bushing Iglidur	W	
7	EC01	00310005129	Bushing Iglidur	W	
8	EC01	00310006553	Screw Feed. Spindle	S	
9	EC01	00310006554	Raise-lower screw	S	
10	EC01	00310004907	Bearing + Screw	W	
11	EC01	00310006555	Stop ring A20	S	
12	EC01	00310006556	Depth indicator cpl.	S	
13	EC01	00310004840	Hand wheel + nut	S	
14	EC01	00310004476	Handle	S	
15	EC01	00310002163	Hand wheel + Handle	S	
16	EC01	00310004190	Handle Grip 1/2"	S	
17	EC01	00310006557	Manoeuvring bar cpl.	S	
18	EC01	00310004177	Wrench 36mm	S	
19	EC01	00310004306	Wrench 30mm	S	
20	EC01	00310004229	Wrench 17mm	S	
21	EC01	00310006558	Support Water Tank	S	
22	EC01	00310003978	Connector for Hose	W	
23	EC01	00310004262	Water cock	W	
24	EC01	00310006559	Water tank cpl.	S	
25	EC01	00310006560	Stopper f. water tank	S	
26	EC02	00310006561	Blade shaft assy.	S	
27	EC02	00310004269	Nut 7/8" L. blade shaft	S	
28	EC02	00310006562	Loose collar 108	S	
29	EC02	00310006563	Bushing 2 blades	S	
30	EC02	00310005219	Inside collar 108	S	
31	EC02	00310004295	Bearing for blade shaft	W	
32	EC02	00310004506	Key for inside collar	S	
33	EC02	00310006564	Blade shaft assy.	S	
34	EC02	00310004835	Blade shaft pulley	S	
35	EC02	00310005200	Guide-a-cut cpl.	S	
36	EC02	00310046746	Blade guard 450 assy	S	
37	EC02	00310004181	Blade guard nut M16	S	
38	EC02	00310004255	Blade guard axle	S	
39	EC02	00310004233	Waterdistributor-Y	W	
40	EC02	00310004426	Water supply tape 1/2"	W	
41	EC02	00310004081	Hose coupling 1/2"	W	

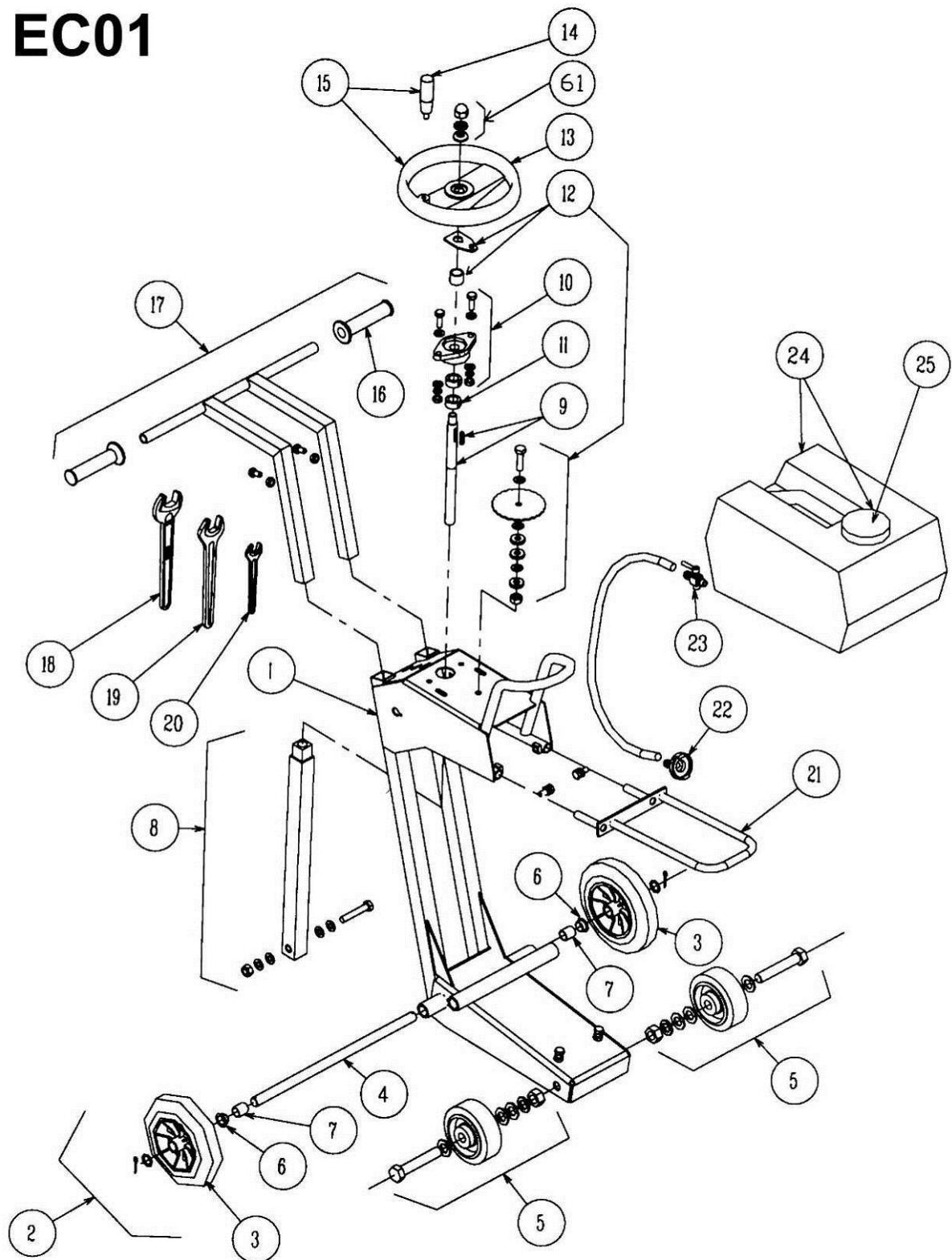
42	EC02	00310006566	Blade splash guard	W	
43	EC02	00310006567	Motor frame	S	
44	EC02	00310006568	Axle motor frame cpl	S	
45	EC02	00310006569	Axle motor frame	S	
46	EC02	00310006570	Brake complete	S	
47	EC02	00310002336	Motor 1B30 Hatz	S	
48	EC02	00310005511	Motor pulley cpl.	S	
49	EC02	00310006572	Belt s XPZ 860 LW	W	
50	EC02	00310006574	Belt guard cpl.	S	
51	EC02	00310006578	Screw for motor	S	
58	EC02	00310002304	Motor stop switch	W	
59	EC02	00310002346	Water hose (set of 2)	W	
60	EC02	00310006886	Nipple 1/2"M-1/4"M	S	
61	EC01	00310004966	Nut hand wheel	S	
62	EC02	00310007048	Dover pin (set of 10)	S	

(*): S = Spare part, W = Wear part

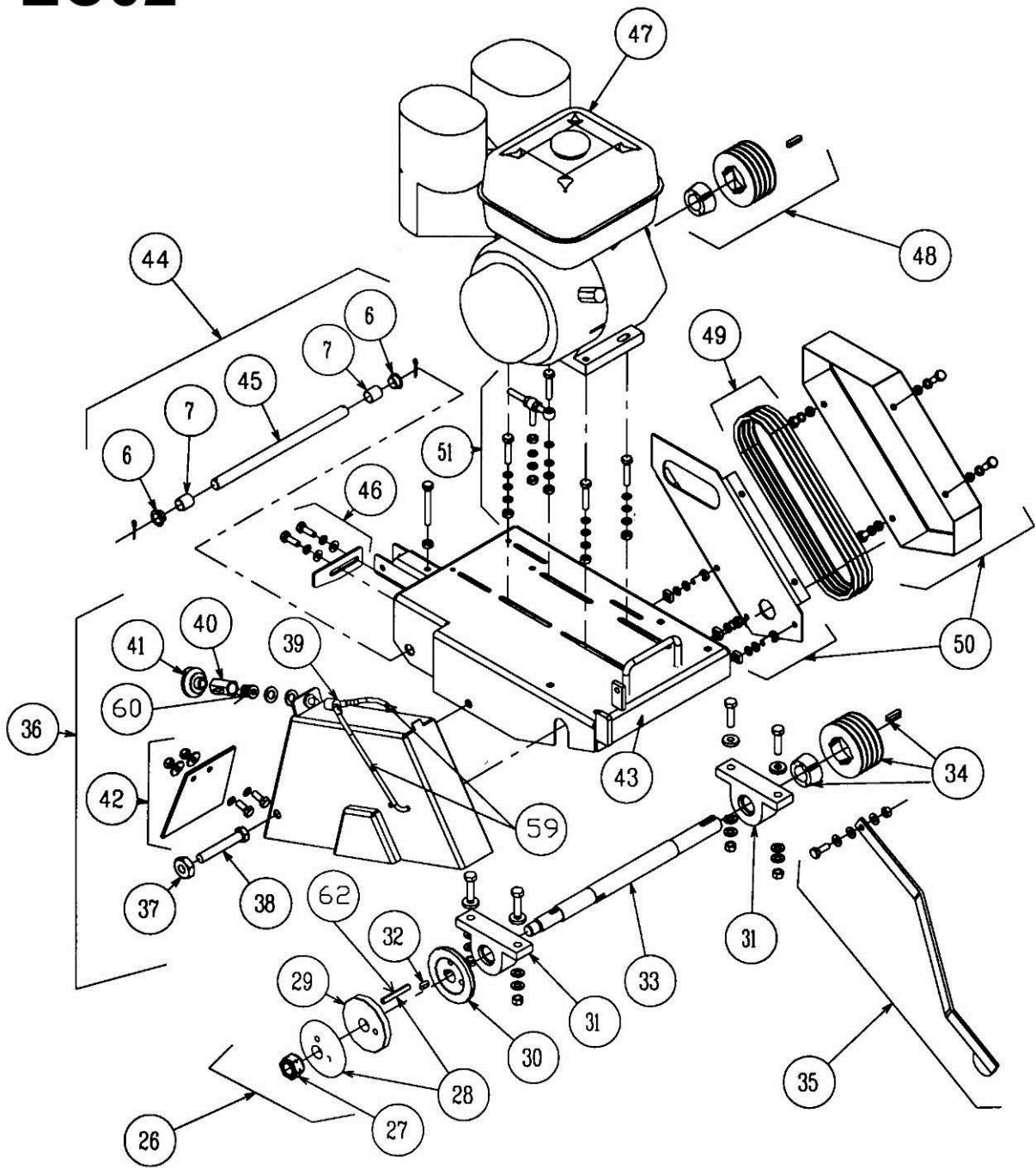
Wear parts are worn out through normal use of the machine. The wear period depends a lot on the intensity of use of the machine. Wear parts must be serviced, used and eventually changed following the indications of the manufacturer. Any wear due to normal use of the machine will not be considered as a case of warranty. Genuine Clipper replacement parts should always be used.

2 Exploded part drawings

EC01



EC02



www.construction.norton.eu

Saint-Gobain Abrasives

190, Bd. J. F. Kennedy
L-4930 BASCHARAGE
LUXEMBOURG

Tel: ++352 50401-1

Fax: ++352 501633

e-mail: sales.nlx@saint-gobain.com

