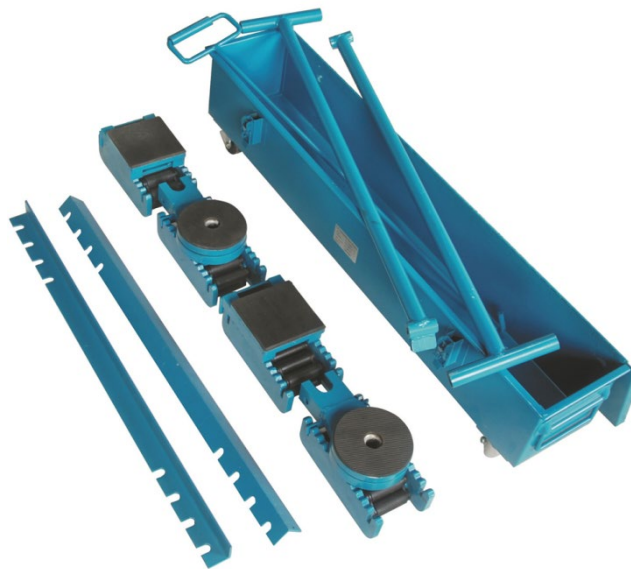




Model: SCS20

Description: Caterpillar Skate Set 20Ton SWL



Specification - Technical Data

Caterpillar Skate Set 20 Ton SWL

***Consists of:**

1 x Draw Bar

2 x Link-up Bars

2 x Steering Handles

2 x Stabilising Plates

2 x Turntables

4 x Roller Skates

1 x Metal Case

***Ideal for Movement of Heavy Machinery in confined areas.**

***Minimum Turning Circle is 3Mtr**

***Steering Handle Gives Precise Control**

***Over-all Low Height**