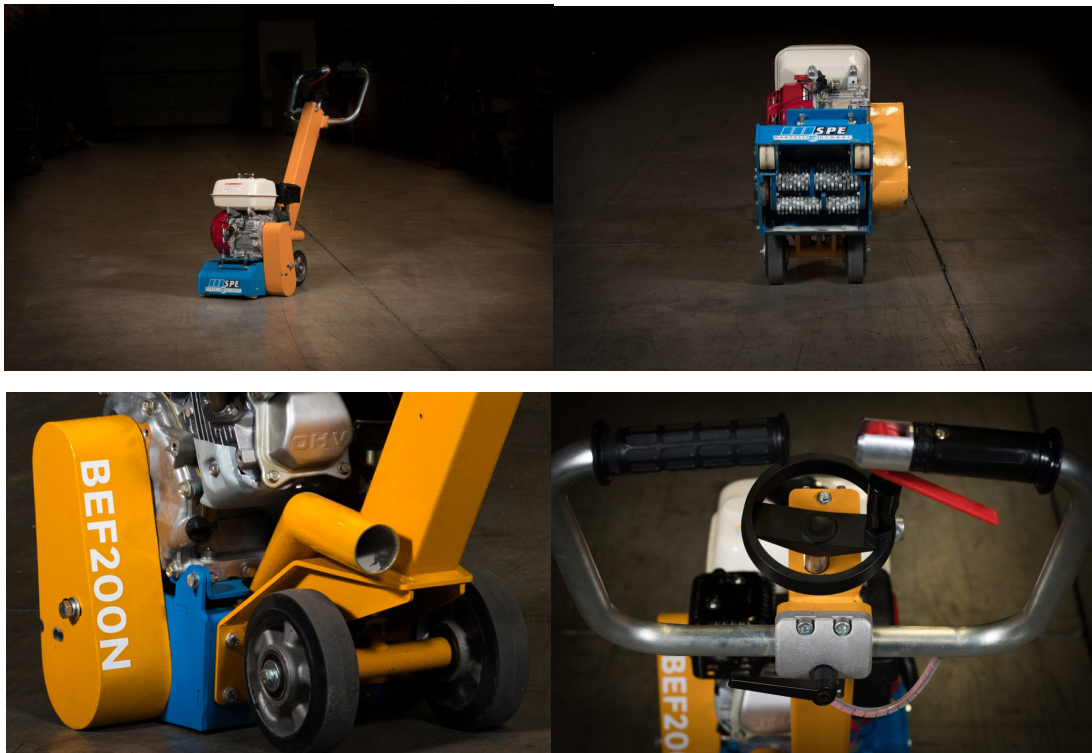




**Make: SPE**  
**Model: BEF200N-4**  
**Description: Floor Planer Petrol**  
**SCARIFIER, SCABBLER AND PLANING MACHINE**



Contractors all around the world for over 30 years. This scarifier is perfect for general surface prep and coating removal on small – medium size jobs. Some features include:

- Rigid, compact design
- Quick Lift – Pulls Cutters In/Out of Cut
- 50mm dust extraction port Dust free when operated with a suitable vacuum
- Large diameter wheels for excellent mobility and stability
- Welded construction is rigid, strong and lower control
- Fine Adjust- Screw type raise and lower control
  - Firm engine mounting plate
  - Front wheels protected from debris
  - Height adjustment at the handle

**BEF 200N - 4(A)**

**Type**

Petrol

---

**Power Output (hp/kw)**

(Gross) 5HP / 4kW

(Net) 4.8HP / 3.6kW

---

**Cutter Head Speed (rpm)**

1833 RPM

---

**Cutter Working Width**

200mm / 7.9"

---

**Working Distance From Wall**

50mm (1.9")

---

**Length (mm/in)**

990mm / (39")

---

**Width (Body)**

375mm / 15"

---

**Width (INCL. Handle)**

429mm / 16"

---

**Height (mm/in)**

942mm / 37"

---

**Weight (kg/lb)**

58kg / 127bs