

USER MANUAL



2.5kw Oil Filled Radiator

**Product Code:
OFRH2.5**

Serial Number Range:

From:

To:

Year Of Manufacture:





ELITE OIL FILLED RADIATOR
OPERATING INSTRUCTIONS



MODEL: OFRH 2.5

WARNING: READ THIS OWNER'S MANUAL CAREFULLY BEFORE USE AND RETAIN THEM FOR FUTURE USE.

When using an electrical appliance, basic safety precautions should always be observed, including the following:

WARNING: To reduce the risk of fire, electrical shock, or injury to person:

1. This appliance is not intended for use by persons (including children) with reduced physical, sensory or mental capabilities, or lack of experience and knowledge, unless they have been given supervision or instruction concerning use of the appliance by a person responsible for their safety.
2. Children should be supervised to ensure that they do not play with the appliance.
3. The product is for indoor household and office use only.
4. Connect the appliance to single phase AC supply of the voltage specified on the rating plate.
5. In order to avoid overheating, do not cover the heater.
6. Never leave the heater unattended while it is in use. Always turn the product to the OFF position and unplug it from the electrical outlet when not in use.
7. Additional caution is necessary when any heater is used by or near children, persons with disabilities or elderly persons.
8. The heater must not be located immediately below an electrical socket-outlet.
9. Do not run cord under carpeting and do not cover cord with rugs, runners or the like. Arrange cord away from high traffic areas and where it will not present a trip hazard.
10. Do not operate the heater with a damaged cord or plug, or after the heater malfunctions, has been dropped, or damaged in any manner.
11. If the supply cord is damaged, it must be replaced by the manufacturer or its service agent or a similarly qualified person to avoid a hazard.
12. Avoid the use of an extension cord as this may overheat and cause a risk of fire.
13. Use the heater in a well-ventilated area. Do not insert or allow objects to enter any ventilation or exhaust opening. To prevent a possible fire, do not block air intakes or exhaust openings in any manner.
14. Do not use on soft surfaces, like a bed, where vented openings may become blocked.
15. Use the heater on flat, dry surfaces only.

16. Do not place this heater near flammable materials, surfaces or substances, as there may be a risk of fire. Keep the above flammable materials, surfaces or substances at least 1m from the front of the product and keep them away from the sides and rear.
17. Do not use the heater in any areas where petrol, paint or other flammable liquids are stored e.g. Garages or workshops as a hot, arcing or sparking parts inside the heater may cause an explosion.
18. Don't use this heater in the immediate surroundings of a bath, a shower or a swimming pool. Never locate the heater where it may fall into bath tub or other water container.
19. This heater is hot when in use. To avoid burns and personal injury, do not let bare skin touch hot surfaces. Always use handles when moving the product or switch off and allow to cool.
20. Be sure that no other appliances are in use on the same electrical circuit as your product as an overload can occur.
21. This heater is filled with a precise quantity of special oil. Repairs requiring opening of the oil container are only to be made by the manufacturer or his service agent who should be contacted if there is an oil leakage.
23. National regulations concerning the disposal of oil when disposing of the appliance must be observed.
24. The heater should not be used in a room, of which the floor area is less than 5 M².
25. The cord shouldn't be placed nearby the hot surface of the appliance.

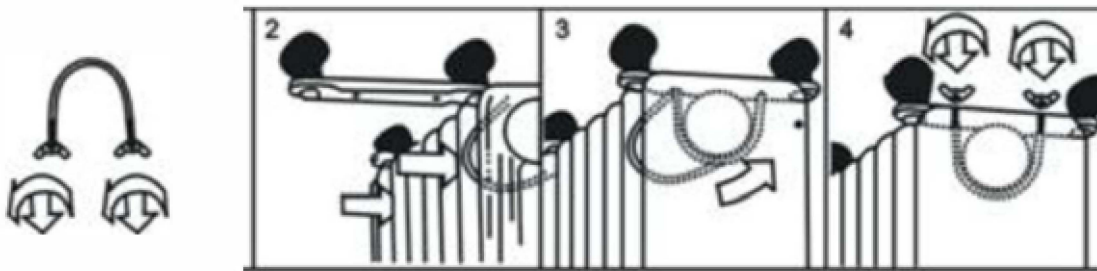


| 2.5 KW OFRH Specifications | |
|----------------------------|-----------------------------|
| 1. Handle | 2. Illuminated Power Switch |
| 3. Thermostat Switch | 4. 24hr Timer |
| 5. Cable Storage | 6. Swivel Castors |

ASSEMBLY INSTRUCTIONS

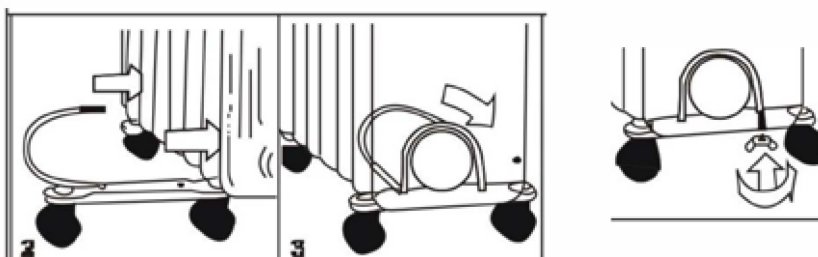
The heater is packaged with the castors and footplate unattached. You must complete the assembly of these parts before operating the heater.

WARNING: Do not operate without footplate and castors attached. Operate the heater only in the upright position (castors on the floor, controls on the top), any other position will cause a potential hazard and prevent correct operation of the safety features.



1. Place the radiator body upside-down on a flat level surface, it is recommended to place a protective mat or blanket on the surface to prevent the radiator from being scratched.
2. Screw off the wing nuts from the U-shaped bolt provided, attach the U-shaped bolt to the U-facing flange between first and second fins (near the front cover).
3. To attach the castor mounting plate to the underside of the radiator body, insert the threaded ends of the U bolt in the holes on the castor mounting plate.
4. Attach the wing nuts on to the U bolt and fasten the wing nut securely.
Note: Do not over tighten, which may cause the damage of radiator flange.
5. Screw off the dome nut from the castor, pass the threaded stud through the hole located on the castor mounting plate. Secure in position with the dome nut. Repeat on the opposite side of the castor mounting plate.
6. Repeat 2, 3, 4 and 5 on the rear of radiator for mounting of the rear castors.
Note: The rear castors must be mounted between the end two fins.

Note: some models have the castors pre mounted onto the castor mounting plate and therefore step 5 is omitted.



INSTRUCTIONS FOR USE

1. Before using the heater, make sure that it is on a flat and stable surface, damage may occur if it is placed on an incline or decline.
2. Set all the controls to OFF position and insert the plug into a earthed socket-outlet. Ensure the plug is fully inserted into the socket. Check the heaters rating plate to ensure the socket used is the correct voltage and input type.
3. Rotate the thermostat knob clockwise to MAX position and switch the heater on as follow: the switch I for low heat, the switch II (with switch I in the off position) for medium heat and both switches on for high heat.
4. When your room reaches the desired temperature, now slowly rotate the thermostat knob counter clockwise until the pilot light goes out and "click" will be audible if there if no excessive background noise.
6. The thermostat can now be left at this setting. As soon as the room temperature has dropped below the set temperature, the unit will switch itself on automatically until the set temperature has been reached again. In this way the room temperature remains constant with the most economical use of electricity.
5. If you want to change the room temperature setting, rotate the thermostat knob clockwise to raise the temperature, or counter clockwise to lower it.
6. This heater includes an overheat protection system that shuts off the heater when parts of the heater are getting excessively hot. The heater will also switch off if the heater is orientated in any other position other than the intended position of operation.
7. To completely shut the heater off, turn all the controls to OFF, and remove plug from the socket-outlet.

TIMER OPERATION

1. Set the time on timer according to the clock by turning it Clockwise (**DO NOT TURN IT COUNTER CLOCKWISE**)
2. The timer has a small function switch, the function is as follows:

I) =Unit is always On; ⌚) =Timer function is ON 0) =Timer function is OFF

3. Set the timer to ⌚ position. There are 96 small plastic pins on the timer, each correspond to 15 minutes interval. Push outward the pins corresponding to the time you want the heater to turn ON and push inward the pins corresponding to the time you want the heater to turn OFF



CAUTION: TIMER IN USE.

Do not use the timer function if the unit is left unattended.

The heater will not operate if timer is set to the 0 position or the pins are not Activated according to the times required.

If the heater loses its electricity supply, e.g. Switched off at the mains socket or in the event of a power failure, the time should be reset after power is restored

The pilot light will be on when the timer is set to ON position or the timing function is activated.

MAINTENANCE

1. Always remove the plug from the socket-outlet and allow the radiator to cool down before cleaning or maintenance.

2 . Wipe radiator with a soft damp (not wet) cloth.

WARNING:

Do not immerse the heater in water.

Do not use any cleaning chemicals such as detergents and abrasives.

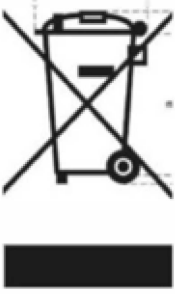
Do not allow the interior to get wet as this could create a hazard.

To store away the heater for long periods of time, wind the cable round the cable holder and store the heater in a clean dry place. If possible use the original packaging if available.

After returning the unit to service it is recommended the unit is inspected for damage and cleaned before use.

In case of malfunction or if any concerns are noted in the correct operation and function of the heater, do not try to repair the radiator yourself, it may result in a fire hazard or electric shock. Contact the reseller or manufacturer for advice.

This product is CE and UKCA marked to denote conformity with Directives 2014/35/EU (Low Voltage Directive), Directive 2014/30/EU (EMC directive) and 2011/65/EU and 2015/863 (RoHS Directive).

| | |
|---|---|
| Correct Disposal of this product Use same font used on the rest of the document | |
|  | <p>This marking indicates that this product should not be disposed with other household wastes throughout the EU. To prevent possible harm to the environment or human health from uncontrolled waste disposal, recycle it responsibly to promote the sustainable reuse of material resources. To return your used device, please use the return and collection systems or contact the retailer where the product was purchased. They can take this product for environmental safe recycling.</p> |



Recycling



ENVIRONMENTAL PROTECTION: Please recycle any unwanted materials as opposed to disposing them as general waste. It is recommended the original is retained and used to store the product when not in use for prolonged periods of time. If this is not applicable ensure the materials are sorted and recycled in accordance with local regulations.




SPECIFICATION CHANGE: It is our policy to continually improve products to ensure these meet the rigours of the industry we serve. Therefore, as such we reserve the right to alter specifications, data, components & parts with-out prior notice.

WARRANTY: Please refer to the manufactures terms & conditions.

IMPORTANT: No liability will be accepted for the incorrect use of this product.

KEEP THIS BOOKLET FOR FUTURE REFERENCE



PSM Plant & Tool Hire Centres Ltd: 020 88505658  info@psmhire.co.uk



www.psmhire.co.uk