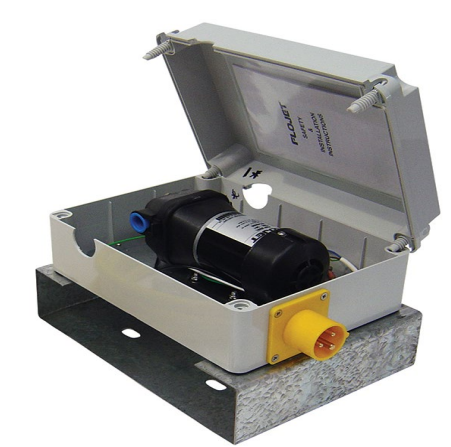




**Make: Flojet**

**Model: D3631H5011AR**

**Description: On Demand Water Pump 110v**



**This On Demand Electric Water Pump are to provide water on-demand from a Bowser to a Welfare Unit, Portable Toilet or Wash Stands.**

**The Bowser water and On Demand Pumps are not for drinking water.**

#### **Description**

- 4.1 Bar switch setting
- 6.1 Lpm max flow
  - Internal bypass
- 115 Volt AC, 0.6 Amps
- Santoprene diaphragm
  - EPDM check valve
    - 3/8" NPTF ports
- Self-priming, up to 2.4m
- Integrated backflow preventer
- Polypropylene pump housing level