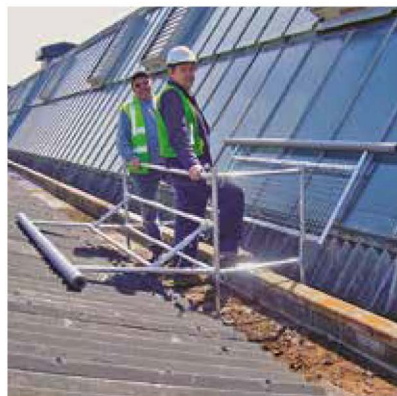


# ▶ VALLEY-WALK



Our Valley-Walk system is a mobile walking frame for one or two persons, designed to aid access along valley gutters and to provide mobile roof cover. Easy to transport and assemble, the unit features cushioned outriggers for comfort which are filled with safety mesh. The Valley-Walk is suitable for typical symmetrical valleys and can be adjusted to suit asymmetrical designs such as northern lights.

## Technical Description

▶ Length	2100mm
▶ Width	1950mm
▶ Material	6082T6 high grade aluminium
▶ Total weight	28kg

## Compliance

▶ EN12811
-----------



*Photographs for illustration purposes only.*